

# Rethinking the Welfare State

## (Preliminary)

Nezih Guner, Remzi Kaygusuz and Gustavo Ventura

NBER SI – Macro Public Finance

# Motivation

## Motivation

- Inequality of earnings over the life-cycle
  - household structure – married and single households, males and females

## Motivation

- Inequality of earnings over the life-cycle
  - household structure – married and single households, males and females
- Inequality in earnings versus inequality of consumption over the life-cycle
  - Individual earnings data vs. household level consumption data.  
Household labor supply as insurance – Blundell, Pistaferri, and Saporta-Eksten (2016)

## Motivation

- Inequality of earnings over the life-cycle
  - household structure – married and single households, males and females
- Inequality in earnings versus inequality of consumption over the life-cycle
  - Individual earnings data vs. household level consumption data.  
Household labor supply as insurance – Blundell, Pistaferri, and Saporta-Eksten (2016)
- The role of public policy
  - Nonlinear taxation and social security;
  - Social insurance programs (means-tested tax credits – Earned Income Tax Credit, Child Tax Credit and Means-tested transfers – AFDC/TANF, Food Stamps, SSI, Housing Assistance)

# This Paper

## This Paper

- We depart from standard one-earner, life-cycle framework with incomplete markets.

## This Paper

- We depart from standard one-earner, life-cycle framework with incomplete markets.
- We present equilibrium framework with uninsurable shocks, a realistic demographic structure and labor supply decisions in two-earner households. We use this framework for **policy analysis**.



## This Paper

- We depart from standard one-earner, life-cycle framework with incomplete markets.
- We present equilibrium framework with uninsurable shocks, a realistic demographic structure and labor supply decisions in two-earner households. We use this framework for **policy analysis**.

Questions:

## This Paper

- We depart from standard one-earner, life-cycle framework with incomplete markets.
- We present equilibrium framework with uninsurable shocks, a realistic demographic structure and labor supply decisions in two-earner households. We use this framework for **policy analysis**.

### Questions:

- What are the roles of public policy and household decisions in shaping economic inequality?

## This Paper

- We depart from standard one-earner, life-cycle framework with incomplete markets.
- We present equilibrium framework with uninsurable shocks, a realistic demographic structure and labor supply decisions in two-earner households. We use this framework for **policy analysis**.

### Questions:

- What are the roles of public policy and household decisions in shaping economic inequality?
- What is the extent of insurance under incomplete markets when two-earner households are explicitly considered?

## This Paper

- We depart from standard one-earner, life-cycle framework with incomplete markets.
- We present equilibrium framework with uninsurable shocks, a realistic demographic structure and labor supply decisions in two-earner households. We use this framework for **policy analysis**.

### Questions:

- What are the roles of public policy and household decisions in shaping economic inequality?
- What is the extent of insurance under incomplete markets when two-earner households are explicitly considered?
- What are the effects of policy reforms? – focus today.

# What we do

## What we do

- Documents facts on inequality in earnings and consumption over the life-cycle for *different types of households*

## What we do

- Documents facts on inequality in earnings and consumption over the life-cycle for *different types of households*
- Develop a life-cycle economy that has the *potential* to account for these facts
  - heterogenous married and single households;
  - Uninsurable productivity shocks;
  - labor supply decisions at intensive and extensive margins
  - progressive taxation of household incomes
  - means-tested tax benefits and transfers

## What we do

- Documents facts on inequality in earnings and consumption over the life-cycle for *different types of households*
- Develop a life-cycle economy that has the *potential* to account for these facts
  - heterogenous married and single households;
  - Uninsurable productivity shocks;
  - labor supply decisions at intensive and extensive margins
  - progressive taxation of household incomes
  - means-tested tax benefits and transfers
- Use this framework to evaluate quantitatively i) changes in *current welfare system*, ii) a system that replaces current *taxes and transfers* with
  - Proportional income tax
  - **Negative income tax**



# Facts

## Facts

- Current Population Survey (CPS) → earnings and hours
  - Household heads and their spouses between ages 25 to 60
  - Drop all observations with hourly wage that is less than federal minimum wage
  - Drop if yearly hours is less than 520 hours per year for those above age 30, less than 260 for those below age 30, and all observations more than 5820 hours of work
  - Huggett, Ventura and Yaron (2010), Heathcote, Perri and Violante (2010).

## Facts

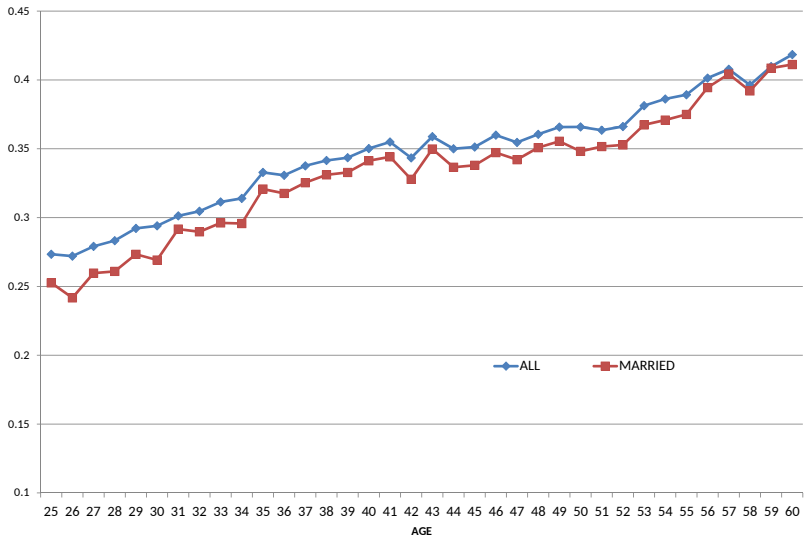
- Current Population Survey (CPS) → earnings and hours
  - Household heads and their spouses between ages 25 to 60
  - Drop all observations with hourly wage that is less than federal minimum wage
  - Drop if yearly hours is less than 520 hours per year for those above age 30, less than 260 for those below age 30, and all observations more than 5820 hours of work
  - Huggett, Ventura and Yaron (2010), Heathcote, Perri and Violante (2010).
- Consumption Expenditure Survey (CEX) → non-durable consumption expenditure.

## Facts

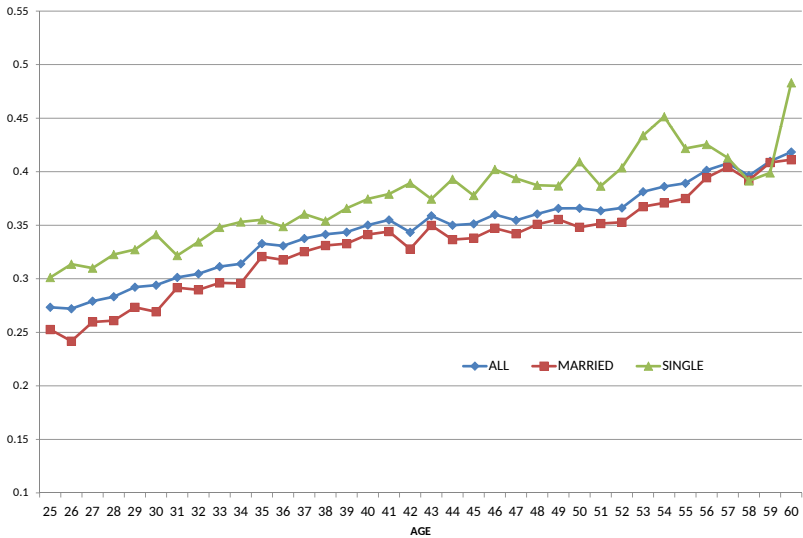
- Current Population Survey (CPS) → earnings and hours
  - Household heads and their spouses between ages 25 to 60
  - Drop all observations with hourly wage that is less than federal minimum wage
  - Drop if yearly hours is less than 520 hours per year for those above age 30, less than 260 for those below age 30, and all observations more than 5820 hours of work
  - Huggett, Ventura and Yaron (2010), Heathcote, Perri and Violante (2010).
- Consumption Expenditure Survey (CEX) → non-durable consumption expenditure.
- Estimate

$$stat_{a,t} = \beta'_a \mathbf{D}_a + \beta'_t \mathbf{D}_t + \varepsilon_{a,t}$$

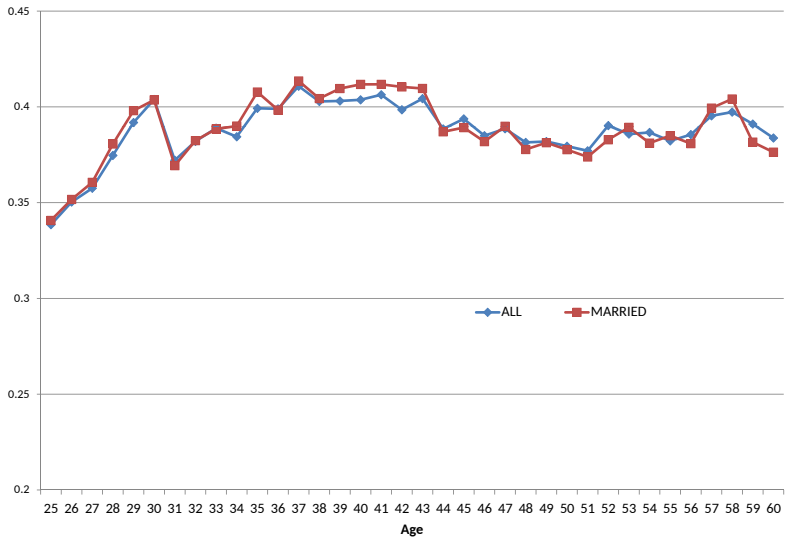
## Variance of Log Earnings, Males



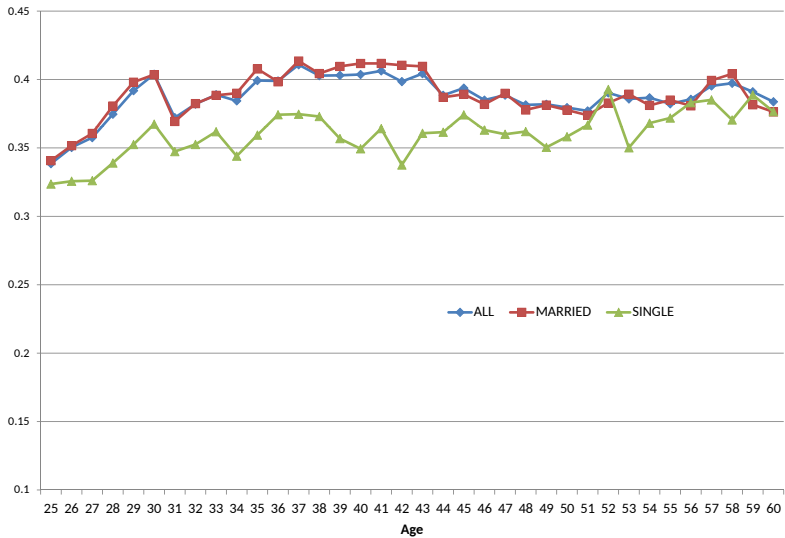
## Variance of Log Earnings, Males



## Variance of Log Earnings, Females

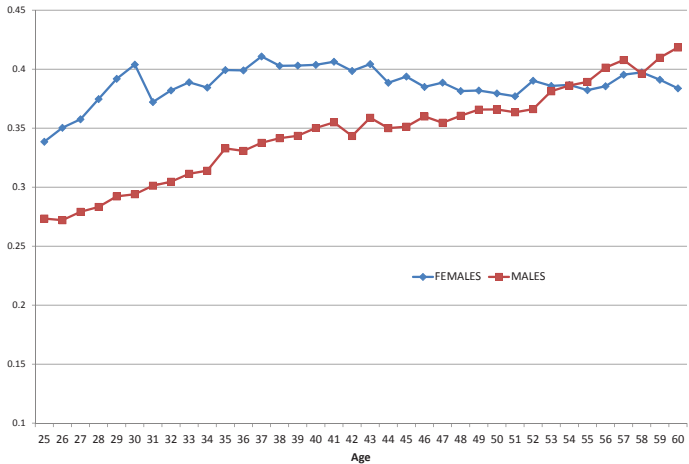


## Variance of Log Earnings, Females

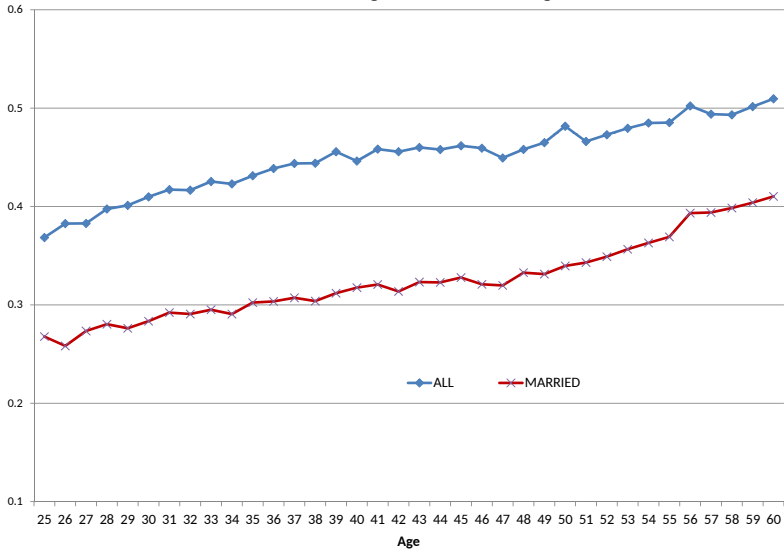




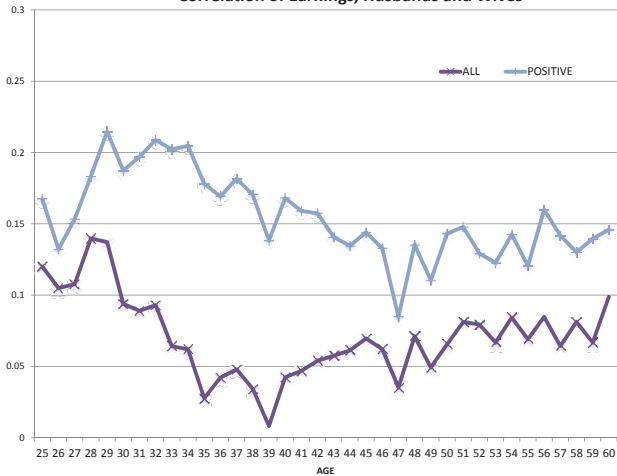
### Variance of Log Earnings, Males and Females (All)



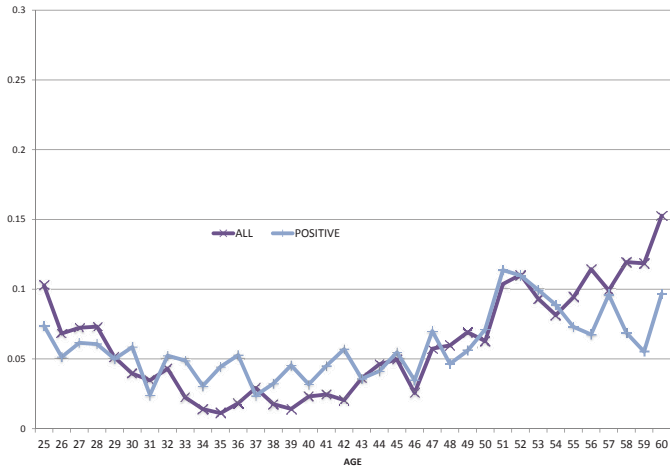
## Variance of Log Household Earnings



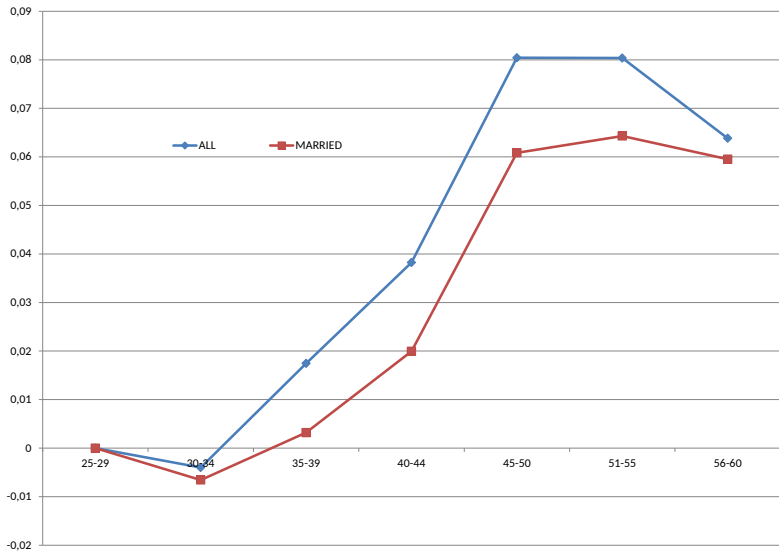
### Correlation of Earnings, Husbands and Wives



### Correlation of Hours, Husband and Wives



## Variance of Log Consumption



# Summary

## Summary

- Variance of log earnings for all males increases non-trivially over the life-cycle.

## Summary

- Variance of log earnings for all males increases non-trivially over the life-cycle.
- For females, married or single, we *do not observe* such increase.



## Summary

- Variance of log earnings for all males increases non-trivially over the life-cycle.
- For females, married or single, we *do not observe* such increase.
- For married and single households, the variance of log earnings increases non-trivially over the life-cycle.  
→ Level of inequality is *much lower* for married households.

## Summary

- Variance of log earnings for all males increases non-trivially over the life-cycle.
- For females, married or single, we *do not observe* such increase.
- For married and single households, the variance of log earnings increases non-trivially over the life-cycle.
  - Level of inequality is *much lower* for married households.
- The variance of log consumption increases over the life-cycle.
  - But *much less than* the increase in the variance of household earnings.

## Summary

- Variance of log earnings for all males increases non-trivially over the life-cycle.
- For females, married or single, we *do not observe* such increase.
- For married and single households, the variance of log earnings increases non-trivially over the life-cycle.
  - Level of inequality is *much lower* for married households.
- The variance of log consumption increases over the life-cycle.
  - But *much less than* the increase in the variance of household earnings.
- The correlation between earnings (hours) of husbands and wives is low and slightly U-shaped over the life-cycle.

# Model

# Model

- Heterogeneity in labor endowments and marital status.
  - Permanent differences (education)
  - Persistent shocks

## Model

- Heterogeneity in labor endowments and marital status.
  - Permanent differences (education)
  - Persistent shocks
- Extensive and Intensive Margins in household labor supply
  - Costly childbearing

## Model

- Heterogeneity in labor endowments and marital status.
  - Permanent differences (education)
  - Persistent shocks
- Extensive and Intensive Margins in household labor supply
  - Costly childbearing
- Policy
  - Tax credits and transfers conditional on income and number of children. Non-linear taxes.

## Model

- Heterogeneity in labor endowments and marital status.
  - Permanent differences (education)
  - Persistent shocks
- Extensive and Intensive Margins in household labor supply
  - Costly childbearing
- Policy
  - Tax credits and transfers conditional on income and number of children. Non-linear taxes.
- Model extension of prior work; Guner, Kaygusuz, and Ventura (2012a, 2012b, 2015).
  - Taxation of secondary earners.
  - Gender-based taxation.
  - Child-related transfers.



## Model – Demographics and Heterogeneity

- Life-cycle economy,  $j = 1, \dots, J_R, \dots, J$ . [25,26,.....,65,.....,80]
- Males ( $m$ ) and females ( $f$ ), differ in their types/education.
  - Male types,  $z \in Z$ . Map into productivity profiles,  $\omega_m(z, j)$ .
  - Female types,  $x \in X$ . Map into initial productivity levels,  $h_1 = \eta(x)$ , and after age 1,  $h$  evolves endogenously.
- Agents can be single or married. Marital status is exogenous, and does not change over the life-cycle.

## Model – Demographics and Heterogeneity

- Married households and single females differ in terms of the number of children attached to them.
  - Three possibilities: *without*, *early*, *late* ( $b = 0, 1, 2$ )
- If a female with children works, married or single, then the household has to pay for child care costs.
- Young (age 1) children imply a time cost for mothers,  $\varkappa$ 
  - Children do not provide any utility.
- Joint market work for married couples also implies a utility cost,  $q$ 
  - *Residual heterogeneity* in labor force participation.

## Model – Female Skills

- Female types,  $x \in X$ . These types map into initial productivity levels,  $h_1 = \eta(x)$ , and after age 1,  $h$  evolves endogenously.
- After age 1, labor market productivity of females evolves endogenously – Attanasio, Low, Sanchez-Marcos 2008

$$h' = \exp[\ln h + \underbrace{\alpha_j^x}_{\text{growth}} \chi(l) - \underbrace{\delta}_{\text{dep.}} (1 - \chi(l))],$$

## Model – Female Skills

- Female types,  $x \in X$ . These types map into initial productivity levels,  $h_1 = \eta(x)$ , and after age 1,  $h$  evolves endogenously.
- After age 1, labor market productivity of females evolves endogenously – Attanasio, Low, Sanchez-Marcos 2008

$$h' = \exp[\ln h + \underbrace{\alpha_j^x}_{\text{growth}} \chi(l) - \underbrace{\delta}_{\text{dep.}} (1 - \chi(l))],$$

→ In the current simulations,  $\delta = 0$ .

## Model – Female Skills

- Female types,  $x \in X$ . These types map into initial productivity levels,  $h_1 = \eta(x)$ , and after age 1,  $h$  evolves endogenously.
- After age 1, labor market productivity of females evolves endogenously – Attanasio, Low, Sanchez-Marcos 2008

$$h' = \exp[\ln h + \underbrace{\alpha_j^x}_{\text{growth}} \chi(l) - \underbrace{\delta}_{\text{dep.}} (1 - \chi(l))],$$

→ In the current simulations,  $\delta = 0$ .

- Given costs (children and utility cost of joint work) and benefits (earnings plus human capital accumulation), females decides whether to work or not.

## Model – Idiosyncratic Productivity Shocks

- For an age- $j$  single male of type  $z$ , earnings are given by

$$\underbrace{w}_{\text{wage}} * \underbrace{\omega(j, z) * \exp(\eta_j^{s,m})}_{\text{labor endowment}} * \underbrace{l_m}_{\text{labor supply}},$$

where  $\omega(z, j)$  is the age-earning profile given  $z$ ,  $\eta_j^{s,m}$  is a *persistent* shock.

- For  $j > 1$ , the persistent shock is governed by an AR(1) process

$$\eta_{j+1}^{s,m} = \rho_{s,m} \eta_j^{s,m} + \varepsilon_{j+1}^{s,m},$$

with  $\varepsilon_{j+1}^{s,m} \sim N(0, \sigma_{\varepsilon^{s,m}}^2)$ .

- Initial value is a Gaussian draw:

$$\eta_1^{s,m} \sim N(0, \sigma_{\eta_1^{s,m}}^2)$$

## Model – Idiosyncratic Productivity Shocks

- For a single female of age- $j$  who has human capital  $h_j$ , earnings are given by

$$\underbrace{w}_{\text{wage}} * \underbrace{h_j * \exp(\eta_j^{s,f})}_{\text{labor endowment}} * \underbrace{l_f}_{\text{labor supply}}$$

- For  $j > 1$ , let

$$\eta_{j+1}^{s,f} = \rho_{s,f} \eta_j^{s,f} + \varepsilon_{j+1}^{s,f}$$

with  $\varepsilon_{j+1}^{s,f} \sim N(0, \sigma_{\varepsilon^{s,f}}^2)$ .

- The initial value is a Gaussian draw:

$$\eta_1^{s,f} \sim N(0, \sigma_{\eta_1^{s,f}}^2)$$

## Model – Idiosyncratic Productivity Shocks

- Married couples

$$w * \underbrace{h_j * \exp(\eta_j^{m,f})}_{\text{labor endowment}} * w * l_f + w * \underbrace{\omega(j, z) * \exp(\eta_j^{m,m})}_{\text{labor endowment}} * l_m,$$

- For  $j > 1$ , the bivariate AR(1) process is

$$\eta_{j+1}^{m,m} = \rho_{m,m} \eta_j^{m,m} + \varepsilon_{j+1}^{m,m} \quad , \quad \eta_{j+1}^{m,f} = \rho_{m,f} \eta_j^{m,f} + \varepsilon_{j+1}^{m,f}$$

with

$$(\varepsilon_{j+1}^{m,m}, \varepsilon_{j+1}^{m,f}) \sim N \left( \begin{array}{c} 0 \\ 0 \end{array}, \begin{array}{cc} \sigma_{\varepsilon^{m,m}}^2 & \sigma_{\varepsilon^f \varepsilon^m} \\ \sigma_{\varepsilon^f \varepsilon^m} & \sigma_{\varepsilon^{m,f}}^2 \end{array} \right),$$

- Initial values for persistent shocks for couples are draws from a bivariate normal distribution. Therefore,

$$(\eta_1^{m,m}, \eta_1^{m,f}) \sim N \left( \begin{array}{c} 0 \\ 0 \end{array}, \begin{array}{cc} \sigma_{\eta_1^{m,m}}^2 & \sigma_{\eta_1^m \eta_1^f} \\ \sigma_{\eta_1^m \eta_1^f} & \sigma_{\eta_1^{f,f}}^2 \end{array} \right)$$



# Model – Idiosyncratic Productivity Shocks

# Model – Idiosyncratic Productivity Shocks

- Many parameters.

## Model – Idiosyncratic Productivity Shocks

- Many parameters.
- For now, we assume that  $\rho_{s,m} = \rho_{s,f} = \rho_{m,m} = \rho_{m,f} = \rho$ .

## Model – Idiosyncratic Productivity Shocks

- Many parameters.
- For now, we assume that  $\rho_{s,m} = \rho_{s,f} = \rho_{m,m} = \rho_{m,f} = \rho$ .
- For now, also assume that  $\sigma_{\varepsilon^{s,m}}^2 = \sigma_{\varepsilon^{s,f}}^2 = \sigma_{\varepsilon^{m,m}}^2 = \sigma_{\varepsilon^{m,f}}^2 = \sigma_{\varepsilon}^2$ .

## Model – Idiosyncratic Productivity Shocks

- Many parameters.
- For now, we assume that  $\rho_{s,m} = \rho_{s,f} = \rho_{m,m} = \rho_{m,f} = \rho$ .
- For now, also assume that  $\sigma_{\varepsilon^s,m}^2 = \sigma_{\varepsilon^s,f}^2 = \sigma_{\varepsilon^m,m}^2 = \sigma_{\varepsilon^m,f}^2 = \sigma_{\varepsilon}^2$ .
- Parameters:  $\{\rho, \sigma_{\varepsilon}^2, \sigma_{\varepsilon^f \varepsilon^m}, \sigma_{\eta_1^s,m}^2, \sigma_{\eta_1^s,f}^2, \sigma_{\eta_1^m,m}^2 = \sigma_{\eta_1^m,f}^2, \sigma_{\eta_1^m \eta_1^f}\}$

## Model – Preferences

- Single male

$$U_m^S(c, l) = \log(c) - B(l)^{1+\frac{1}{\gamma}}.$$

## Model – Preferences

- Single male

$$U_m^S(c, l) = \log(c) - B(l)^{1+\frac{1}{\gamma}}.$$

- Single female

$$U_f^S(c, l, k_y) = \log(c) - B(l + \underbrace{k_y \varkappa}_{\text{time cost}})^{1+\frac{1}{\gamma}},$$

where  $k_y \in \{0, 1\}$  is an indicator for young (age-1) children.

## Model – Preferences

- Single male

$$U_m^S(c, l) = \log(c) - B(l)^{1+\frac{1}{\gamma}}.$$

- Single female

$$U_f^S(c, l, k_y) = \log(c) - B(l + \underbrace{k_y \varkappa}_{\text{time cost}})^{1+\frac{1}{\gamma}},$$

where  $k_y \in \{0, 1\}$  is an indicator for young (age-1) children.

- Married female

$$U_f^M(c, l_f, q, k_y) = \log(c) - B(l_f + k_y \varkappa)^{1+\frac{1}{\gamma}} - \underbrace{\frac{1}{2} \chi\{l_f\} q}_{\text{utility cost}},$$



## Model – Preferences

- Single male

$$U_m^S(c, l) = \log(c) - B(l)^{1+\frac{1}{\gamma}}.$$

- Single female

$$U_f^S(c, l, k_y) = \log(c) - B(l + \underbrace{k_y \varkappa}_{\text{time cost}})^{1+\frac{1}{\gamma}},$$

where  $k_y \in \{0, 1\}$  is an indicator for young (age-1) children.

- Married female

$$U_f^M(c, l_f, q, k_y) = \log(c) - B(l_f + k_y \varkappa)^{1+\frac{1}{\gamma}} - \underbrace{\frac{1}{2}\chi\{l_f\}q}_{\text{utility cost}},$$

- Married male

$$U_m^M(c, l_m, l_f, q) = \log(c) - B l_m^{1+\frac{1}{\gamma}} - \frac{1}{2}\chi\{l_f\}q.$$

## Model – Government I

- Income tax functions  $T^M(I, k)$  and  $T^S(I, k)$ 
  - $k$  is an indicator for children Tax functions

$$\text{average tax rate (income)} = \eta_1 + \eta_2 \log(\text{income}) + \varepsilon,$$

- We estimate these functions from Internal Revenue Service (IRS) micro data – Guner, Kaygusuz and Ventura (2014)
- Besides the income and payroll taxes, each household pays an additional flat capital income tax for the returns from his/her asset holdings,  $\tau_k$ .
- There is a social security system financed by a flat payroll tax,  $\tau_p$ 
  - Social Security payments are indexed by agents' permanent types (education)

## Model – Government II

- Earned Income Tax Credit (EITC) and Child Tax Credit (CTC)
  - Model them exactly as they are in the tax code
- Transfers
  - Survey of Income and Program Participation (SIPP), 1995-2013
  - Estimate effective transfer functions.
  - Include AFDC/TANF, SSI, Food Stamps/SNAP, WIC
- Total transfer functions  $TR^M(I, k)$  and  $TR^S(I, k)$

## Decision Problem – Married Households

## Decision Problem – Married Households

$$\theta = (x, z, q, b)$$

## Decision Problem – Married Households

$$\theta = (x, z, q, b)$$

$$\begin{aligned} V_j^M(a, h, \eta_j^{m,f}, \eta_j^{m,m}; \theta) &= \max_{a', l_f, l_m} \{ [U_f^M(c, l_f, q, k_y) + U_m^M(c, l_m, l_f, q)] \\ &+ \beta EV_{j+1}^M(a', h', \eta_j^{m,f'}, \eta_j^{m,m'}; \theta) \}, \end{aligned}$$

## Decision Problem – Married Households

$$\theta = (x, z, q, b)$$

$$V_j^M(a, h, \eta_j^{m,f}, \eta_j^{m,m}; \theta) = \max_{a', l_f, l_m} \{ [U_f^M(c, l_f, q, k_y) + U_m^M(c, l_m, l_f, q)] \\ + \beta EV_{j+1}^M(a', h', \eta_j^{m,f'}, \eta_j^{m,m'}; \theta) \},$$

subject to (with kids)

$$c + a' + \underbrace{d\chi(l_f)}_{\text{child care costs}}$$

$$= a(1 + r(1 - \tau_k)) + w(\omega_m(z, j) \exp(\eta_j^{m,m})l_m + h \exp(\eta_j^{m,f})l_f)(1 - \tau_p)$$

$$- \underbrace{T^M(w\omega_m(z, j) \exp(\eta_j^{m,m})l_m + w \exp(\eta_j^{m,f})hl_f + ra, 1)}_{\text{taxes}}$$

$$+ \underbrace{TR^M(w\omega_m(z, j)l_m + whl_f + ra, 1)}_{\text{transfers}}$$

## Decision Problem – Married Households

$$\theta = (x, z, q, b)$$

$$V_j^M(a, h, \eta_j^{m,f}, \eta_j^{m,m}; \theta) = \max_{a', l_f, l_m} \{ [U_f^M(c, l_f, q, k_y) + U_m^M(c, l_m, l_f, q)] \\ + \beta EV_{j+1}^M(a', h', \eta_j^{m,f'}, \eta_j^{m,m'}; \theta) \},$$

subject to (with kids)

$$c + a' + \underbrace{d\chi(l_f)}_{\text{child care costs}}$$

$$= a(1 + r(1 - \tau_k)) + w(\omega_m(z, j) \exp(\eta_j^{m,m})l_m + h \exp(\eta_j^{m,f})l_f)(1 - \tau_p)$$

$$- \underbrace{T^M(w\omega_m(z, j) \exp(\eta_j^{m,m})l_m + w \exp(\eta_j^{m,f})hl_f + ra, 1)}_{\text{taxes}}$$

$$+ \underbrace{TR^M(w\omega_m(z, j)l_m + whl_f + ra, 1)}_{\text{transfers}}$$

$$h' = G(x, h, l_f, j)$$



# Quantitative Analysis

## Quantitative Analysis

- Four permanent types: less than or equal to high school (hs), some college (sc), college (col) and post-college (col+)

# Quantitative Analysis

- Four permanent types: less than or equal to high school (hs), some college (sc), college (col) and post-college (col+)
- Demographic structure.
  - marital status; → about 74% of people are married
  - who is married with whom; → about 50% of people marry someone of their own type
  - child bearing status from data.

# Quantitative Analysis

- Four permanent types: less than or equal to high school (hs), some college (sc), college (col) and post-college (col+)
- Demographic structure.
  - marital status; → about 74% of people are married
  - who is married with whom; → about 50% of people marry someone of their own type
  - child bearing status from data.
- Taxes and transfers from data. **Tax-Transfers**

# Quantitative Analysis

- Four permanent types: less than or equal to high school (hs), some college (sc), college (col) and post-college (col+)
- Demographic structure.
  - marital status; → about 74% of people are married
  - who is married with whom; → about 50% of people marry someone of their own type
  - child bearing status from data.
- Taxes and transfers from data. **Tax-Transfers**
- Choose parameters of  $q$  distribution to match participation of married females 25-54.

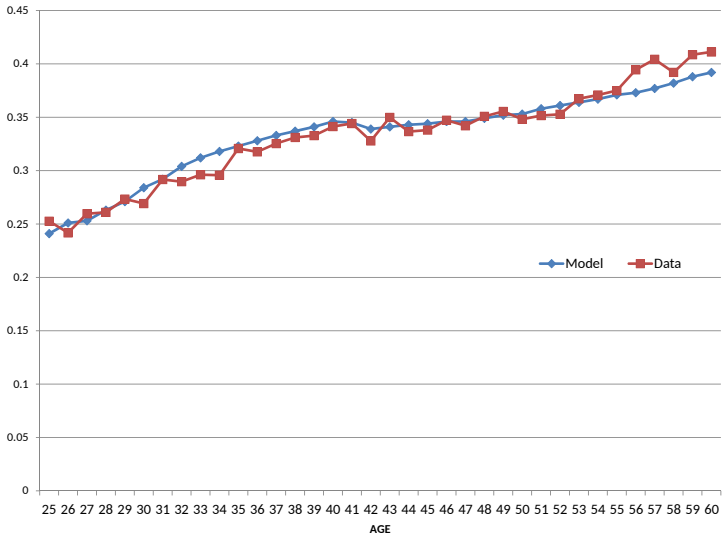
## Quantitative Analysis – Shocks

- 7 parameters:  $\{\rho, \sigma_{\varepsilon}, \sigma_{\varepsilon^f \varepsilon^m}, \sigma_{\eta_1^{s,m}}, \sigma_{\eta_1^{s,f}}, \sigma_{\eta_1^{m,m}} = \sigma_{\eta_1^{m,f}}, \sigma_{\eta_1^m \eta_1^f}\}$
- $\rho = 0.958$  – Kaplan (2012)
- $\sigma_{\varepsilon}^2 = 0.011$  – var. of log earnings, married males.
- $\sigma_{\varepsilon^f \varepsilon^m} = 0.0034$  – corr. of earnings b/w hus. and wives, 45-54
- $\sigma_{\eta_1^{s,m}}^2 = 0.21$  – var. of log earnings, single males, 25-29
- $\sigma_{\eta_1^{s,f}}^2 = 0.24$  – var. of log earnings, single females, 25-29
- $\sigma_{\eta_1^{m,m}}^2 = \sigma_{\eta_1^{m,f}}^2 = 0.11$  — var. of log earnings, married males, 25-29
- $\sigma_{\eta_1^m \eta_1^f} = 0.042$  – corr. of earnings b/w hus. and wives, 25-29

## Model and Data

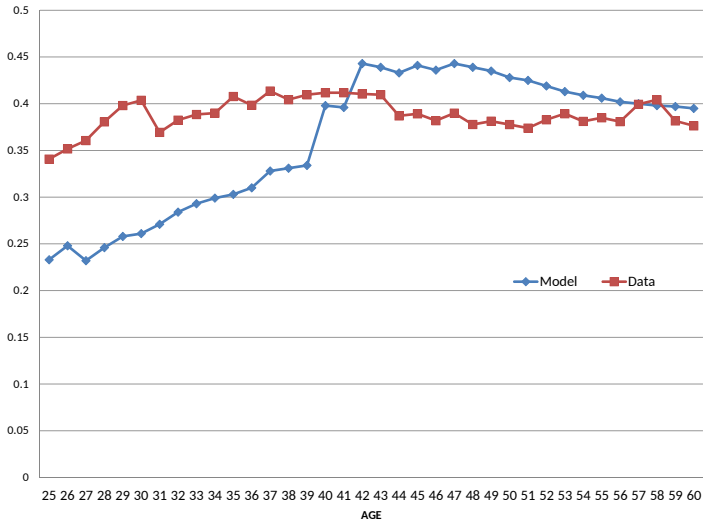
<u>Statistic</u>	<u>Data</u>	<u>Model</u>
Capital Output Ratio	2.93	2.97
Labor Hours Per-Worker	0.40	0.4
LFP of Married Females with Young Children (%)	62.6	60.2
LFP of Married Females (%), 25-54		
Less than High School	61.8	61.1
Some College	74.0	73.1
College	74.9	76.6
More than College	81.9	80.5
Total	72.2	70.3
With Children	68.3	66.6

## Variance of Log Earnings, Married Males

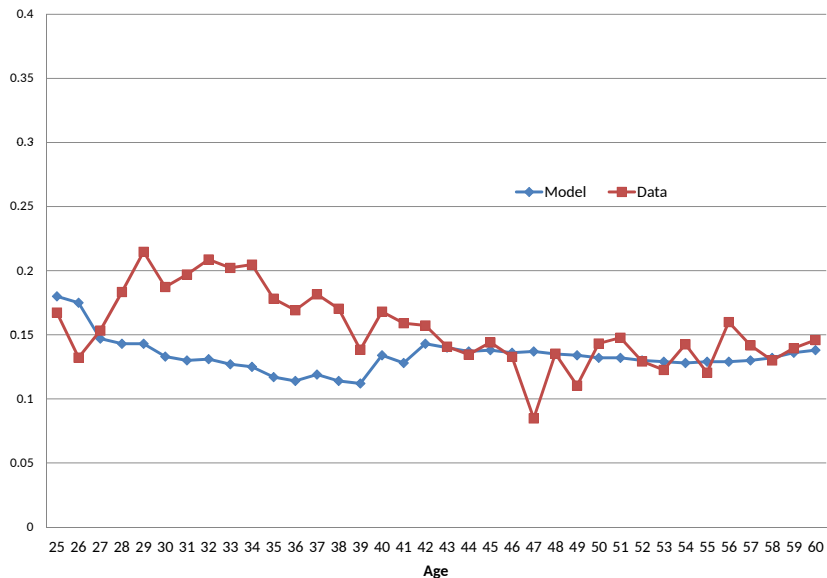




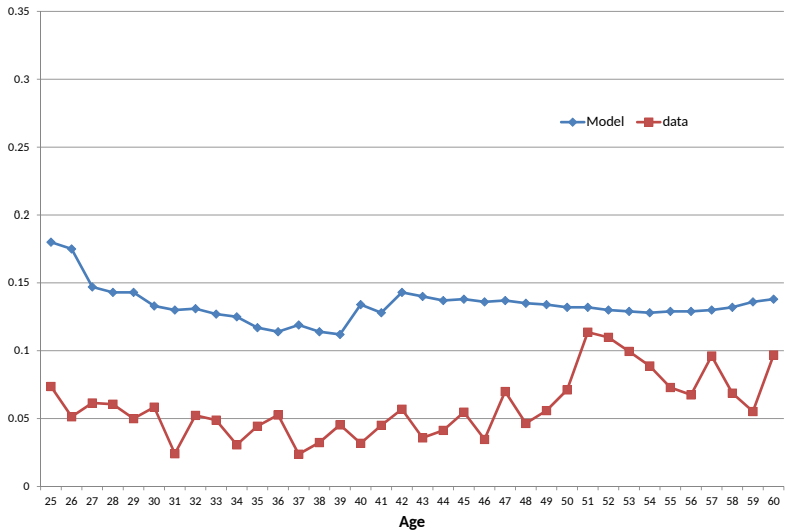
## Var of Log Earnings, Married Females



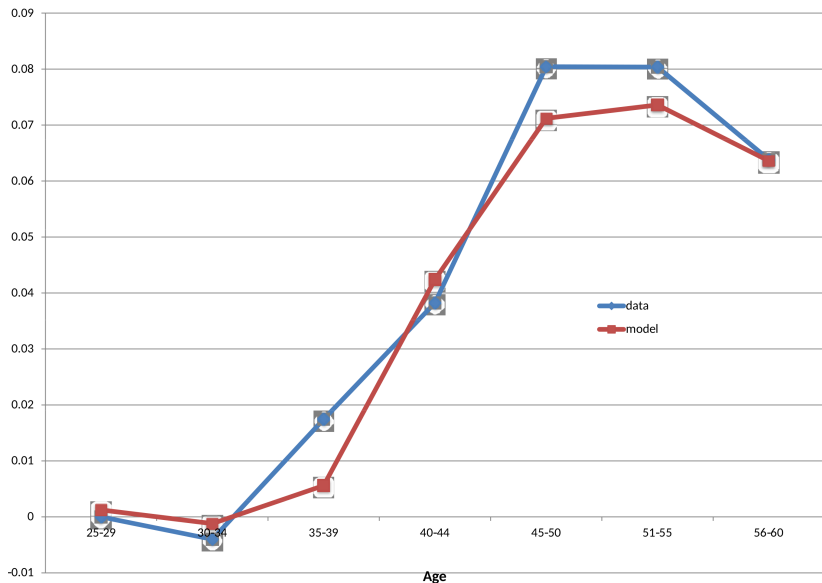
## Correlation of Earnings, Husbands and Wives



## Correlation of Hours, Husbands and Wives



## Variance of Log Consumption, all households



# Benchmark Economy

# Benchmark Economy

- Captures the rise in earnings inequality for males

# Benchmark Economy

- Captures the rise in earnings inequality for males
- More work is needed in case of females.

# Benchmark Economy

- Captures the rise in earnings inequality for males
- More work is needed in case of females.
- Captures life-cycle pattern of earnings correlations.



# Benchmark Economy

- Captures the rise in earnings inequality for males
- More work is needed in case of females.
- Captures life-cycle pattern of earnings correlations.
- Does a very good job generating the rise in consumption inequality

# Benchmark Economy

- Captures the rise in earnings inequality for males
- More work is needed in case of females.
- Captures life-cycle pattern of earnings correlations.
- Does a very good job generating the rise in consumption inequality
- To do:
  - Better match of data. Shock parameterization.
  - Match correlations of hours between husbands and wives.

# Rethinking the Welfare State

# Rethinking the Welfare State

- Replace all taxes and transfers with a proportional tax.
  - Revenue neutral
  - Tax rate is 9.6%

# Rethinking the Welfare State

- Replace all taxes and transfers with a proportional tax.
  - Revenue neutral
  - Tax rate is 9.6%
- Replace all taxes and transfers with a Negative Income Tax (NIT)
  - Each household receives a transfer of 2.5% (5%) of mean HH income in all dates and states.
  - All HH face same proportional income tax.
  - Tax rate is 16.3% (26.0%)

# Rethinking the Welfare State

- Replace all taxes and transfers with a proportional tax.
  - Revenue neutral
  - Tax rate is 9.6%
- Replace all taxes and transfers with a Negative Income Tax (NIT)
  - Each household receives a transfer of 2.5% (5%) of mean HH income in all dates and states.
  - All HH face same proportional income tax.
  - Tax rate is 16.3% (26.0%)
- Open Economy

## Rethinking the Welfare State

% Change from Benchmark Economy

	Proportional Tax	Negative Income Tax (2.5%)	Negative Income Tax (5%)
Output	9.9	0.8	-16.1
Married Fem. LFP	5.8	2.0	-5.5
Agg. Hours	5.3	1.3	-4.6
Agg. Hours (mar. fem.)	9.3	2.5	-8.4
Hours per worker (female)	5.0	1.3	-3.7
Hours per worker (male)	3.9	0.7	-3.7
Tax Rate	9.6%	16.3%	26.0%
Welfare (CV, %)	-3.1	-1.5	-3.1
Winning Households (%)	51%	33.5%	29.2

## Rethinking the Welfare State

% Change from Benchmark Economy

	Proportional Tax	Negative Income Tax (2.5%)	Negative Income Tax (5%)
Output	9.9	0.8	-16.1
Married Fem. LFP	5.8	2.0	-5.5
Agg. Hours	5.3	1.3	-4.6
Agg. Hours (mar. fem.)	9.3	2.5	-8.4
Hours per worker (female)	5.0	1.3	-3.7
Hours per worker (male)	3.9	0.7	-3.7
Tax Rate	9.6%	16.3%	26.0%
Welfare (CV, %)	-3.1	-1.5	-3.1
Winning Households (%)	51%	33.5%	29.2

- Large effects on output and labor supply from a proportional income tax. Smaller or negative effects under NIT.



## Rethinking the Welfare State

% Change from Benchmark Economy

	Proportional Tax	Negative Income Tax (2.5%)	Negative Income Tax (5%)
Output	9.9	0.8	-16.1
Married Fem. LFP	5.8	2.0	-5.5
Agg. Hours	5.3	1.3	-4.6
Agg. Hours (mar. fem.)	9.3	2.5	-8.4
Hours per worker (female)	5.0	1.3	-3.7
Hours per worker (male)	3.9	0.7	-3.7
Tax Rate	9.6%	16.3%	26.0%
Welfare (CV, %)	-3.1	-1.5	-3.1
Winning Households (%)	51%	33.5%	29.2

- Large effects on output and labor supply from a proportional income tax. Smaller or negative effects under NIT.
- Asymmetric welfare effects.

# Rethinking the Welfare State

# Rethinking the Welfare State

- A NIT can be quite 'expensive' and does not lead to aggregate welfare gains. How about expanding it to only households with children?

## Rethinking the Welfare State

- A NIT can be quite 'expensive' and does not lead to aggregate welfare gains. How about expanding it to only households with children?
- Each household receives a transfer of 2.5% of mean HH income in all dates and states. PLUS 2.5% per child if children are present.

## Rethinking the Welfare State

% Change from Benchmark Economy

	Proportional Tax	NIT (2.5%)	NIT (5%)	NIT (2.5%, v.2)
Output	9.9	0.8	-16.1	-17.1
Married Fem. LFP	5.8	2.0	-5.5	-12.9
Agg. Hours	5.3	1.3	-4.6	-9.2
Agg. Hours (mar. fem.)	9.3	2.5	-8.4	-18.2
Hours per worker (female)	5.0	1.3	-3.7	-6.6
Hours per worker (male)	3.9	0.7	-3.7	-6.6
Tax Rate	9.6%	16.3%	26.0%	31.0
Welfare (CV, %)	-3.1	-1.5	-3.1	1.6
Winning Households (%)	51%	33.5%	29.2	46.9

# Conclusions

## Conclusions

- Documents facts on inequality in earnings and consumption over the life-cycle for *different types of individuals and households*

## Conclusions

- Documents facts on inequality in earnings and consumption over the life-cycle for *different types of individuals and households*
- Develop a life-cycle economy that has the *potential* to account for these facts



## Conclusions

- Documents facts on inequality in earnings and consumption over the life-cycle for *different types of individuals and households*
- Develop a life-cycle economy that has the *potential* to account for these facts
- Use this framework to evaluate quantitatively

## Conclusions

- Documents facts on inequality in earnings and consumption over the life-cycle for *different types of individuals and households*
- Develop a life-cycle economy that has the *potential* to account for these facts
- Use this framework to evaluate quantitatively
  - a system that replaces current *taxes and transfers* with versions of a *negative income tax*.

## Conclusions

- Documents facts on inequality in earnings and consumption over the life-cycle for *different types of individuals and households*
- Develop a life-cycle economy that has the *potential* to account for these facts
- Use this framework to evaluate quantitatively
  - a system that replaces current *taxes and transfers* with versions of a *negative income tax*.
  - Other reforms to the current *welfare state* – to do.

## Conclusions

- Documents facts on inequality in earnings and consumption over the life-cycle for *different types of individuals and households*
- Develop a life-cycle economy that has the *potential* to account for these facts
- Use this framework to evaluate quantitatively
  - a system that replaces current *taxes and transfers* with versions of a *negative income tax*.
  - Other reforms to the current *welfare state* – to do.
- A simple NIT is quite expensive and does not easily dominate current system in terms of welfare.

## Conclusions

- Documents facts on inequality in earnings and consumption over the life-cycle for *different types of individuals and households*
- Develop a life-cycle economy that has the *potential* to account for these facts
- Use this framework to evaluate quantitatively
  - a system that replaces current *taxes and transfers* with versions of a *negative income tax*.
  - Other reforms to the current *welfare state* – to do.
- A simple NIT is quite expensive and does not easily dominate current system in terms of welfare.
- Much more to come...